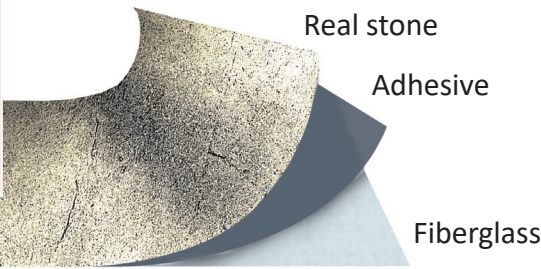


# INSTRUCTION: TRANSLUCENT



SLATE LITE™



## MATERIAL

*Translucent sheet*

## PREPARATION

Before starting work, check the *Translucent* stone veneer you have received for possible errors, defects or damage. All stone sheets must lie flat before processing.

In order to achieve a nice image, all sheets to be processed should be spread out before starting work to determine which sheets you want to process and where.



## MATERIAL

*Slate-Lite Impregnation or Slate-Lite Special Protection or Slate-Lite 2K-protection wall*

*foam roller*

*lint-free cloth*

## PROTECTION

The impregnation / sealing process can take place both before and after processing.

To do this, apply the impregnator or sealer with a foam roller thinly and evenly in a cross-pattern on your *Translucent* sheet.

When applying the protective product, make sure that you do not apply excessive pressure, as this can create bubbles that do not dissolve and dry into white spots.

30 minutes after applying the impregnator, remove the excess with a dry, lint-free cloth.

*Tips:*

→ By applying the *Slate-Lite 2K-protection wall* several times the protection factor can be increased.

→ Sealing in wet areas is best after cutting and before applying glue to avoid open spots.



Please check the color-deepening effect of the product on a sample in advance when impregnating and sealing!

For detailed information on processing and the special features of the individual accessory products, please refer to the respective data sheets.

## MATERIAL

*Impregnator or sealer*

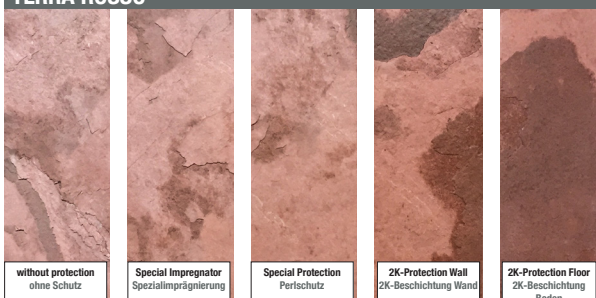
## ADDITIONAL INFO: COLOR INTENSIFICATION

Impregnator and sealer change the color and feel of the stone. The following pictures give you an example of the darkening.

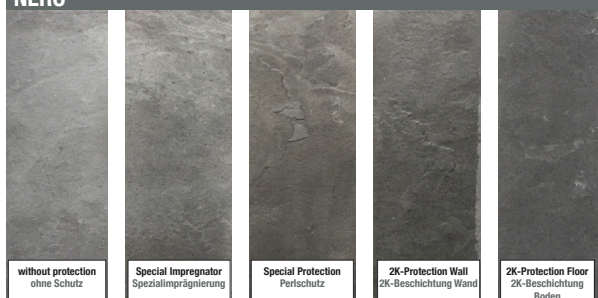
Always carry out a test on leftover pieces of your chosen *Slate-Lite* decor before processing in order to convince yourself of the result of the sealing.



### TERRA ROSSO



### NERO



# INSTRUCTION: TRANSLUCENT



SLATE LITE™

## MATERIAL

*Soudal MS Clear*

*smooth trowel*

*Optional:  
rubber gloves  
spirit level*

## ADHESIVE

Apply the glue to the back of the sheet or the surface to be processed. Spread the adhesive evenly with a smooth trowel and make sure that no bubbles form between the material and the substrate.

Then attach the sheet to the area provided and fix the material by hand.

The adhesive is fully cured after 48 hours.

*Tips:*

- In order to achieve the best possible result, work with a spirit level and lay the material from bottom to top.
- We recommend wearing rubber gloves.
- Remnants of adhesive on the sheet can be removed with the *Slate-Lite Special Cleaner*.



**!**  
*Alternatively, the ASK DS770 spray adhesive can be used. However, this does not allow any further corrections after the sheet has been attached to the desired position.*

## MATERIAL

*Cordless screwdriver with drill  
or  
Table / circular saw  
or  
Multi-tool  
or  
Jigsaw*

## CUTTING AND DRILLING

*Translucent* can be processed with all common wood and stone processing tools.

A guide rail can be helpful here.



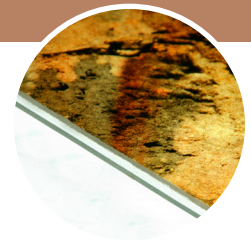
## MATERIAL

*Acrylic glass  
or  
glass*

## BACKING MATERIAL

*Translucent* can be glued to glass or acrylic for better stability and light distribution.

When using fluorescent tubes, acrylic sheets with a frosted glass color have proven to be particularly effective, as they distribute the light effectively.



## MATERIAL

*Slate-Lite  
Special Cleaner*

## GLUE RESIDUE

If there is glue residue on the translucent sheets, you can carefully remove them with the *Slate-Lite Special Cleaner*.

Almost all types of adhesives can be removed this way.



# INSTRUCTION: TRANSLUCENT



SLATE LITE™

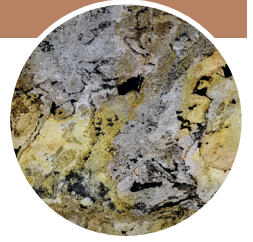
## MATERIAL

*Light source*

## DIFFERENT LIGHTING MOODS

Depending on the type of light, different effects are achieved with our *Translucent* stone veneers: You can use cold, warm or even colored light to create your individual, unique light object made of stone.

When using fluorescent tubes, acrylic sheets with a frosted glass color have proven to be particularly effective, as they distribute the light effectively.



Example *Falling Leaves Translucent*:

