

SLATE LITE

ETICS FACADES WITH SLATE-LITE

The ETICS façade (thermal insulation composite system) is the most common type of façade and the easiest way to create a natural stone façade with Slate-Lite.

Simply use our stone veneers as a final top layer and your home will shine in new splendor!

Save time when building the façade and reach your goal faster:
Thanks to the low weight and easy processing, you can lay up to 50m² per day!

the future of stone



In principle, any type of existing façade can be finished with our thin stone veneers.

For other types of façade in addition to an ETICS façade, we will be happy to advise you individually!

EXISTING FACADE OR NEW BUILD?

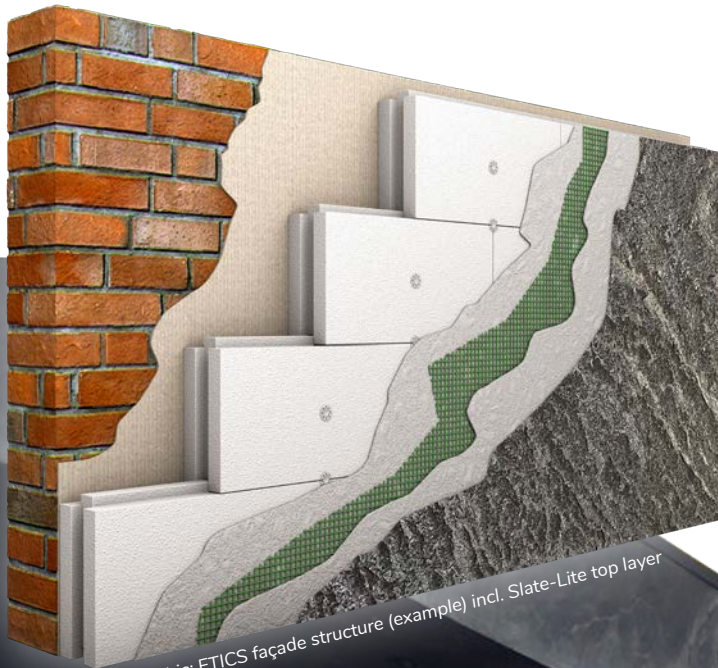
You don't have to build a completely new façade to upgrade it with *Slate-Lite* stone veneers.

As long as the existing façade is in good general condition and structural integrity, existing façades can also be extended without any problems!



The integrity of your existing façade can be checked by an expert using simple cross-cut tests, bead peel tests and moisture measurements.

- ▶ The substrate must be dry, clean, frost-free, firm or sufficiently sufficiently stable and free from cracks, efflorescence and microbial infestation.
- ▶ Low-strength or non-load-bearing surface layers, separating layers (e.g. dirt, dust, grease, oil, paint residues, etc.) must be removed.
- ▶ Previously applied undercoat plasters, fillers and the like must be completely dry/hardened and have the appropriate load-bearing capacity.



ADHERING SLATE-LITE ON THE FACADE

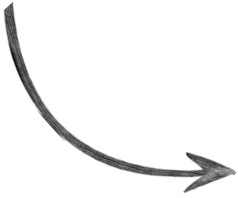
Slate-Lite can be simply bonded to a standard ETICS façade as a final top layer on the mineral substrate reinforced with reinforcing mesh. The basic structure of the ETICS façade is carried out in accordance with applicable regulations and standards.

[The reinforcing mesh must be installed in the upper third of the plaster layer (executed in accordance with VOB/C[1]ATV-DIN 18350, DIN EN 13914 and DIN 18550) whereby the thickness of the plaster layer must not be less than 5mm. Unevenness must be ± 3 mm so that the adhesive application with B3 notched trowel provides sufficient adhesion].

For optimum bonding we recommend our *Slate-Lite Extreme Adhesive*.

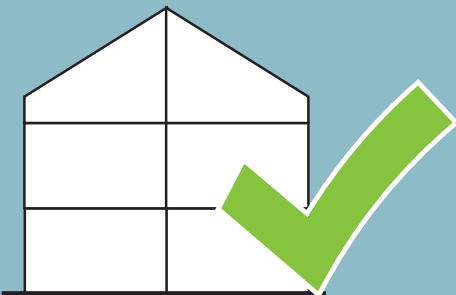


TURN OLD INTO NEW!



BUILDING CLASSES AND APPROVALS

(according to DE regulations, building classes may vary depending on the country)



Building class 1
Height up to 7m
Freestanding
< 400 m² / 2 UU

Slate-Lite is approved for all buildings in DE class 1, which also includes detached single or multi-family houses.



For projects in building classes 2-5, please contact our sales department, we will be happy to advise you on the implementation of corresponding construction projects!

WEATHER INFLUENCES WITH NATURAL STONE

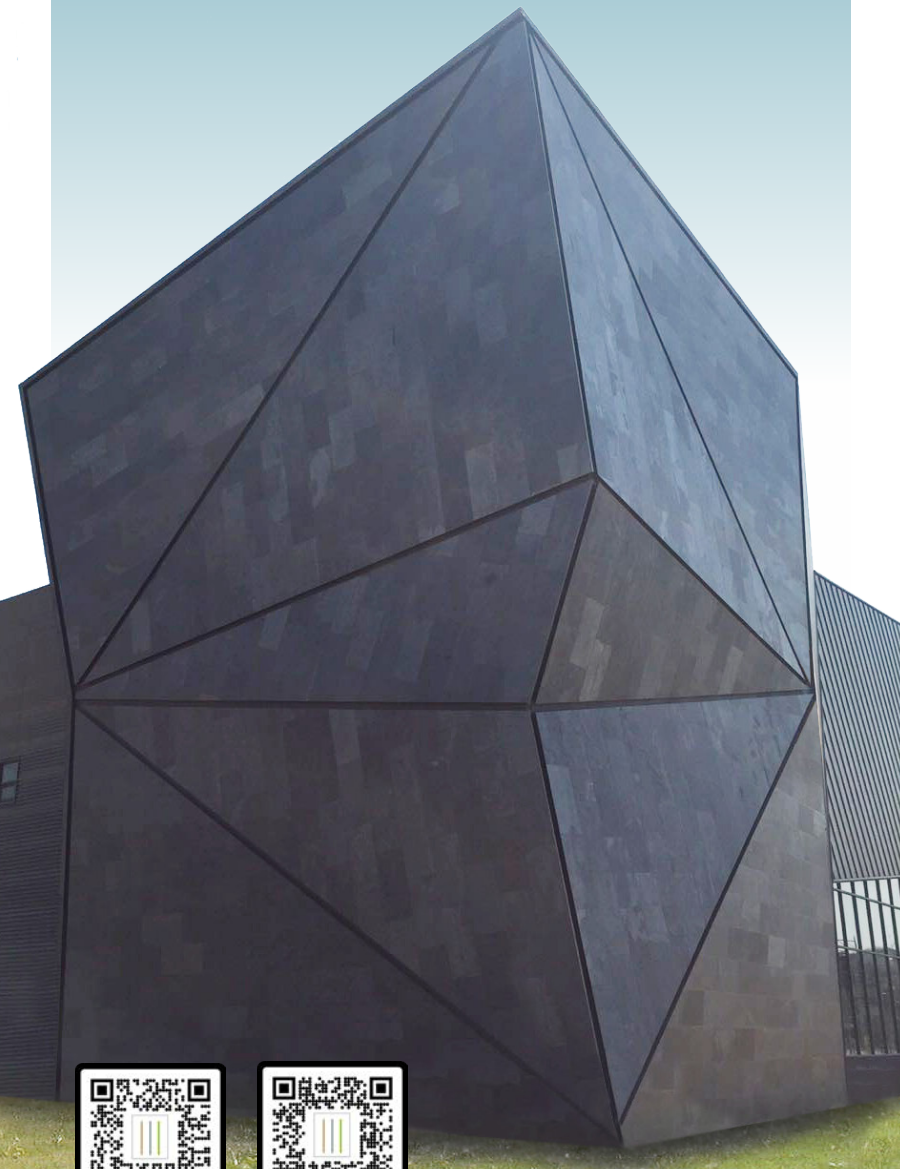
Thanks to the 100% natural stone surface, the weathering of our stone veneers causes hardly any or minimal uniform deviations in color.

Test method: Resistance to UV radiation (UV-B) according to DIN EN ISO 11507
Test cycle: 4 hours; irradiation 50°C / 4 hours; thawing 40°C
Test duration: 1,000 hours with evaluation after 250h, 500h, 750h
Evaluation: Color change according to DIN EN ISO 11664-4, Sp62 by X-Rite
Measuring geometry: d/8°, illuminant: D65

Signs of weathering such as black mold, algae, green deposits or other environmental soiling can usually be removed quickly and easily with clean water and a brush.

In outdoor areas, cleaning with a high-pressure cleaner is also possible, but please observe the distance recommended by the appliance manufacturer when using it.

All Slate-Lite stone veneers are also frost-proof.



vCard



Datasheet