



SLATE LITE

the future of stone.



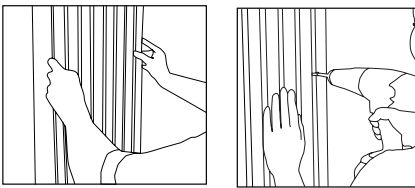
ACOUSTIC PANELS

Base panel: PET panel of 9 mm (approx. $\frac{1}{3}$ inches)
 Wooden slats: MDF (medium density fiberboard) 8 mm ($\frac{5}{16}$ inches)
 Cover: Slate-Lite natural stone veneer approx. 1.5 mm ($\frac{1}{6}$ inches)
 Density: 1200 gsm
 Weight: approx. 6.4 kg / m² (1.31 lb/ft²)

Acoustic effect: The acoustic panel is based on a sound-absorbing PET fleece with known absorption properties. With an open surface area of approx. 36%, acoustic effectiveness with an NRC of 0.85 to 0.96 can be expected, based on comparative values and theoretical calculations. *)

Special designs and customized decors available on request.
 Use the acoustic panels on interior walls -
 do not use them in wet rooms or in outdoor areas.

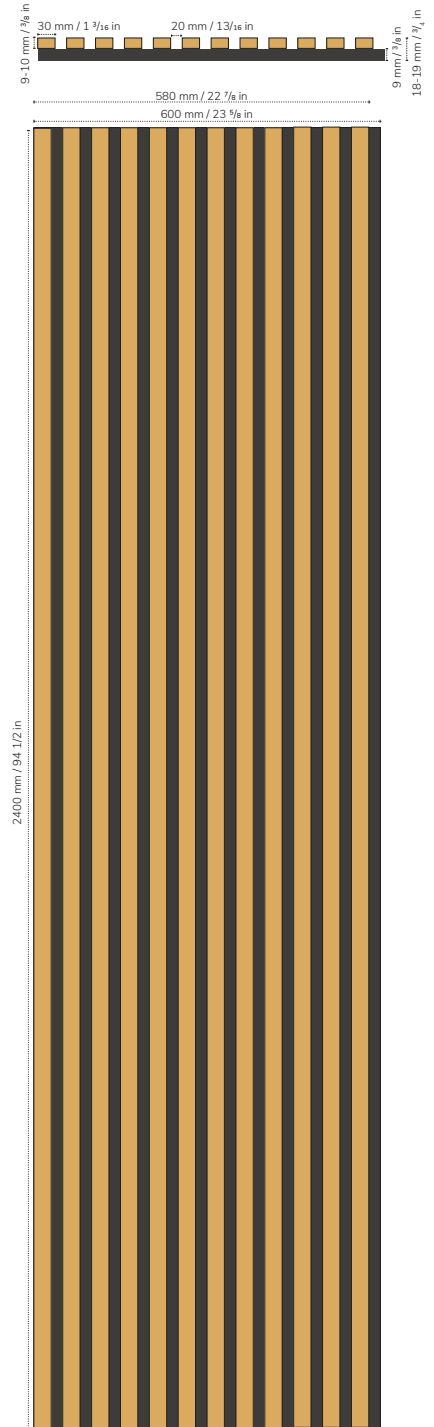
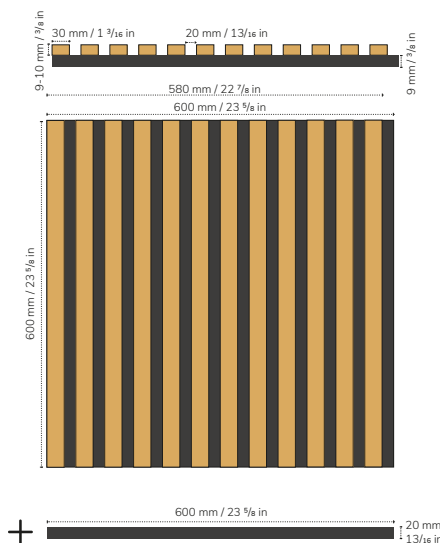
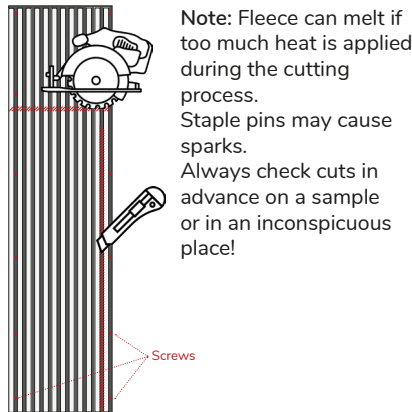
PROCESSING / INSTALLATION



Option (A):
 Position the acoustic panels on the desired mounting surface and screw or nail them directly into the wall.



Option (B):
 Apply glue to the back of the panels, position them on the mounting surface, and press firmly into place.



*) The actual absorption value depends on the room acoustics, the strip material and the type of installation. A laboratory measurement in accordance with ISO 354 has not yet been carried out.